



QuickReceipt

SMART PRINTING CALCULATOR
DP-32AD-RCPT

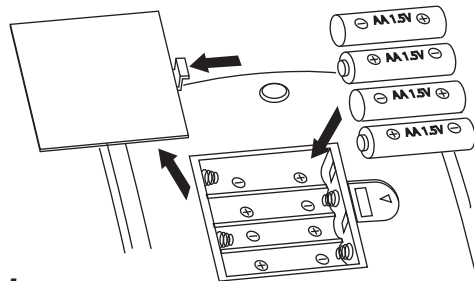
OPERATION MANUAL

Thank you

Datexx would like to express our appreciation for your purchase by inviting you to register at www.datexx.com to receive a free extended warranty! Datexx registered members will also receive exclusive access to online sales and discounts throughout the year. We offer a wide variety of products that are great for gifts and your everyday life. **Register Today!**

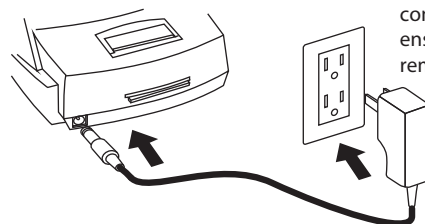
Before You Begin

Installation of Batteries:



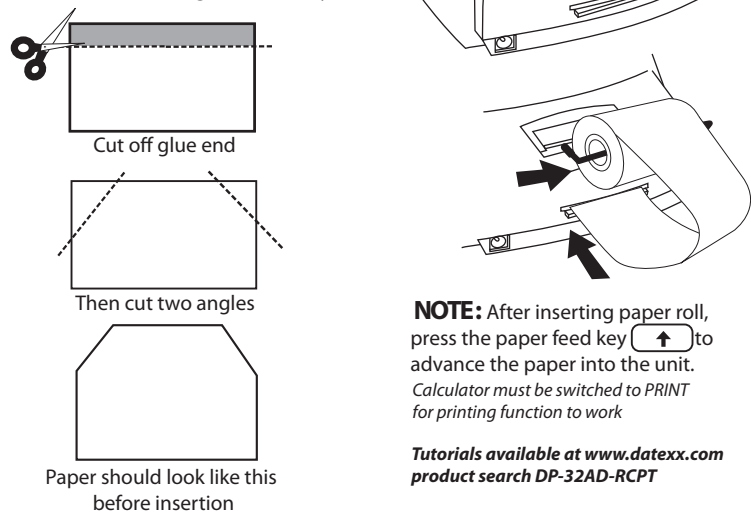
NOTE: Please install 4 AA batteries and connect the device to AC power to ensure Date and Time settings remain stored in memory.

AC Adapter Hook-up:



Loading of Paper Roll:

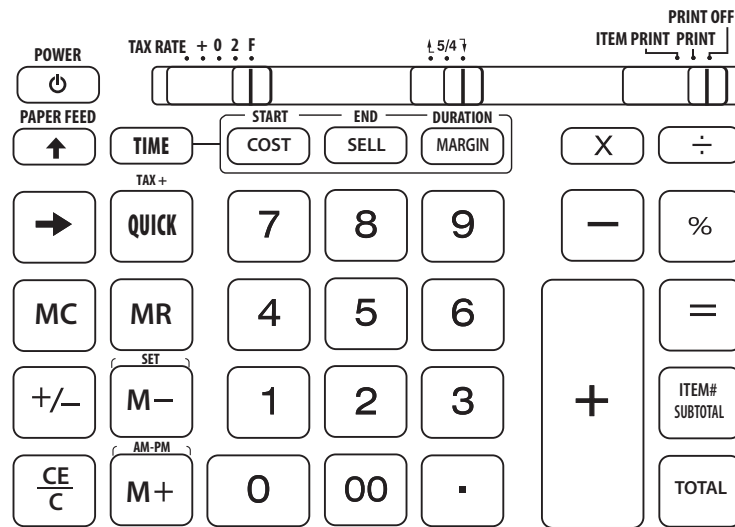
NOTE: Cut the end of the paper roll with two angles for an easy feed.



NOTE: After inserting paper roll, press the paper feed key to advance the paper into the unit. Calculator must be switched to PRINT for printing function to work

Tutorials available at www.datexx.com
product search DP-32AD-RCPT

Keys and Switches



Keys:

- [] Turn power ON and OFF
- [QUICK] Print total + tax & date stamp / Print duplicate
- [] Paper feed key
- [] Back space key
- [CE/C] Clear entry/clear and wake up from stand-by mode
- [Item#/SUBTOTAL] Subtotal key and item number print key
- [TOTAL] Total key
- [+/-] Inverts positive and negative
- [COST] [SELL] [MARGIN] Profit analysis function keys
- [0]~[9] [00] Numeral Keys [.] Decimal point key
- [+] Add key [-] Subtract key [x] Multiplication key
- [÷] Division key [=] Equal key [%] Percent key
- [M+] Memory plus key [M-] Memory minus key
- [MR] Memory subtotal recall key [MC] Memory total clear key
- [TIME] Switch to time mode for time set & time calculation

Secondary Function Keys:

- [START] Start time entry key for time duration calculation
- [END] End time entry key for time duration calculation
- [DURATION] Duration key for time duration calculation
- [SET] Date and Time set key for clock
- [AM-PM] Key to toggle between morning or afternoon
- [TAX+] Add tax key

Slide Switches:

- TAX RATE TAX RATE: Select to set tax rate
- . + 0 2 F Decimal set: (+) Accountant, (+, 0, 2) Fixed decimal point, (F) Floating decimal point
- 5/4 () Round up, () Round off, () Round down
- PRINT OFF PRINT OFF: Non-printing mode
- ITEM PRINT PRINT PRINT: Printing mode
- ITEM PRINT: Prints calculations with item numbers

Set Date and Time

Setting Date:

1. Press Display: 0
2. Press Display: 01-01-2017
3. Press and hold until first digit flashes on screen M- Display: 01-01-2017

4. Enter the Date

Example: 09-15-2017 (September 15, 2017)

- 0 9 1 5 2 0 1 7
5. Press to confirm M- Display: 09-15-2017

Setting Time:

1. Press Display: AM 01-15-05
2. Press and hold until first digit flashes on screen M- Display: AM 01-15

3. Enter the Time

Example: 12:45 PM

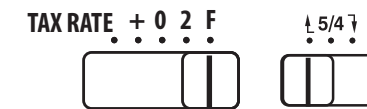
- 1 2 4 5 M+
4. Press to confirm M- Display: PM 12-45-00

NOTE: Auto power shut-off will occur after 1 minute of inactivity when "0" is displayed on screen and when the device is powered by battery only. The same will happen after 30 minutes when plugged-in to AC power. Press [CE/C] to wake the device up.

Set Tax Rate

1. Toggle Decimal Switch to TAX RATE
2. Enter Tax Rate Example: 5.5%
3. Toggle Decimal Switch back to F (Floating Decimal)

Decimal Point and Rounding Setting Examples



Decimal set = F Rounding set =

1.4231 x 3 =

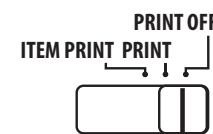
Decimal set = 2 Rounding set = 5/4

1.4231 x 3 =

Decimal set = 0

1.4231 x 3 =

Set Print Mode



PRINT OFF: Non-printing mode when using the unit as a regular calculator

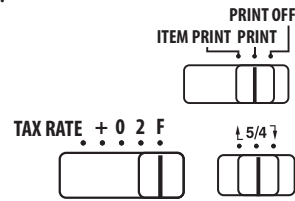
PRINT: Printing mode
Note: Make sure the paper roll is loaded properly. Operating in this mode without paper may damage the printer head.

ITEM PRINT: Prints itemized calculations

How to Operate

Toggle switches to following settings:

Print = PRINT
 Decimal Mode = F
 Rounding Mode = 5/4



Addition, Subtraction, Multiplication, and Division

Example: $(24 + 36 - 75) \times 8 \div (-9) = 13.3333333333$

Operation	Display	Print
CE	0.	0. C
2 4 +	24.	24. +
3 6 +	60.	36. +
7 5 -	-15.	75. -
\times	-15.	-15. x
8 \div	-120.	8. \div
9 +/-	-9.	-9. =
=	13.3333333333	13.3333333333 *

Multiplication of a Constant

Example: $25 \times 3 = 75$, $25 \times 4 = 100$, $25 \times 5 = 125$

Operation	Display	Print
CE	0.	0. C
2 5 \times	25.	25. x
3 =	75.	3. =
4 =	100.	75. *
5 =	125.	4. =
		100. *
		5. =
		125. *

Percentage Calculation

Example: $95 \times 7.8\% = 7.41$

Operation	Display	Print
CE	0.	0. C
9 5 \times	95.	95. x
7 . 8	7.8	7.8 %
%	7.41	7.41 *

Cost / Sell / Margin Calculation

Example: **Selling Price=\$100, Margin=30%, Cost=?**

Operation	Display	Print
1 00 SELL	SELL 100.	100. *◇
3 0 MARGIN	COST 70.	30. M%
		70. CC

Example: **Cost=\$25, Margin=20%, Selling Price=?**

Operation	Display	Print
2 5 COST	COST 25.	25. CC
2 0 MARGIN	SELL 31.25	20. M%
		31.25 *◇

Example: **Cost=\$15, Selling Price=\$25, Margin=?**

Operation	Display	Print
1 5 COST	COST 15.	15. CC
2 5 SELL	MARGIN% 40.	25. *◇
		40. M%

Time Duration Calculation

Example Start time: 9:15AM, End time: 3:30PM

Step	Operation	Display	Print
1. Press	TIME	01-01-2017	
2. Press	START COST	AM 1--01-00	
3. Enter Start Time	0 9 1 5	AM 1--09-15	
4. Press	END SELL		
5. Enter End Time	0 3 3 0 AM-PM M+	PM --103-30	
6. Press	DURATION MARGIN	PM Hr 6.25	
			Print
			...01-02-2017...
			#01...09-15...
			#02...03-30...
			6.25 Δ
			...01-02-2017..

Time duration is 6.25 hours

Printing Quick Receipts

Example: **\$25 + \$20 + \$12 with 8.5% Sales Tax**

Operation	Display	Print
Toggle switch to TAX RATE	TAX RATE + 0 2 F	
Enter Tax Rate	8 . 5	
Set decimal switch to 2	TAX RATE + 0 2 F	
Set rounding switch to 5/4	TAX RATE + 0 2 F	

Operation	Display	Print
2 5 +	25.00	25.00 +
2 0 +	45.00	20.00 +
1 2 +	57.00	12.00 +
QUICK	TAX+ 61.85	57.00 +
		8.5 %
		4.85 Δ
		61.85 *
		...01-02-2017..
		...09-45..
Print 2nd Copy		
Press QUICK	TAX+ 61.85	57.00
		8.5 %
		4.85 Δ
		61.85 *
		...01-02-2017..
		...09-45..

Memory Calculation

Example: $(20 \times 31) - (98 \div 5) = 600.4$

Operation	Display	Print
Set decimal switch to F	TAX RATE + 0 2 F	
Set rounding switch to 5/4	TAX RATE + 0 2 F	
2 0 \times	20.	20. x
3 1 M+	31.	31. =
	MEMORY 620.	620. M+
9 8 \div	98.	98. \div
5 M-	5.	5. =
	MEMORY 19.6	19.6 M-
MR	MEMORY 600.4	600.4 M◇
MC	MEMORY 600.4	600.4 M*

NOTE: In print mode, do not press any keys if the paper roll is not loaded (except the paper feed key \uparrow). Doing so may damage the printer head.

Specifications

Display:	12 digits, large LCD display
Printing Speed:	2.03 lines/sec.
Print Paper Roll:	Width: 57 mm, Diameter: 30 - 60 mm
Power Sources:	AC 100 - 240V, 50/60Hz with AC Adapter (6.3V 600mA)
	4 AA (UM-3) Batteries
Operation Temperature:	0 - 40°C (32 - 104°F)
Power Consumption:	3.78 W
Dimensions:	220 mm x 155 mm x 53 mm (L x W x H)
Ink Roller:	MS37901 (Available at any office supply store)
Printing Color:	2 Color - Black and Red (Negative)
Weight:	430 g

Reset Procedure

In case of software malfunction, use the tip of a ball point pen to press the [RESET] button at the bottom of the unit. After resetting, be sure to set the calendar, clock, and tax rate again.

Replacing the ink roller

If the print out becomes faint, the ink roller needs to be replaced.

1. Buy ink roller MS37901
2. Turn the power off
3. Open the clear printer cover
4. Pull out the old ink roller
5. Insert the new ink roller and gently press it down until it clicks

Caution

- Do not immerse the product in water or other liquids
- Do not use alcohol, benzene, or thinners to clean the product
- To clean the product, wipe with a dry, soft cloth

Tutorials available at www.datexx.com

product search DP-32AD-RCPT

Warranty

TELEDEX INC. warrants these products to the original purchaser to be free from defective material and workmanship. Under this warranty, the product will be repaired or replaced at our discretion, for up to one year without charge except for supplies or accessories such as batteries. Please email sales@datexx.com for return authorization.

TELEDEX INC. 1 Atlas St. Kenilworth, NJ 07033

Tell Us Why You Love Quick Receipt

- ✉ sales@datexx.com
- 📘 [facebook/datexxinc](https://www.facebook.com/datexxinc)
- 🐦 [twitter/datexxinc](https://twitter.com/datexxinc)
- 📷 [instagram/datexxinc](https://www.instagram.com/datexxinc)



datexx
www.datexx.com

